



Address : AMA VINA CO.,LTD., Co Dien Village, Hai Boi Commune, Dong Anh District, Ha Noi, Vietnam.

Factory 1: Co Dien Village, Hai Boi Commune, Dong Anh District, Ha Noi, Vietnam.

Factory 2: CN12-01, Yen Phong Industrial Park, Bac Ninh city, Vietnam.

Factory 3: Doan Bai Industrial Cluster, Doan Bai and Luong Phong communes, Hiep Hoa district, Bac Giang City, Viet Nam. (52.000 m2 June 2024 start)

President: AMA VINA CO.,LTD., Vu Van Manh
(M) 097 683 5774, (Email) ceo01@amavina.vn

Chairman: AMAHOLDING INVESTMENT., JSC Vu Van Truong
(M) 098 268 1998, (Email) ceo@amavina.vn

CEO Director: Chihun Woo
(M)038 508 2660, (Email) chwoo7044@gmail.com

Web: <http://amavinagroup.vn/>
Fax: (84-24) 7302 6678



AMA GROUP

CORPORATION INTRODUCTION

About Us

During production activities, many equipments and parts are used. And such products have stability and effectiveness according to their functions.

People are looking for better products beyond their stability and effectiveness. Pursuing better designs, we aim to improve productivity and quality.

However, it is not easy to satisfy excellent performance, design, and quality at the same time. So, AMA is seeking creative ideas and new materials through partnerships. We are researching to ensure long-term, high-efficiency products with minimum cost and highest quality.

AMA specializes in development, design, mold, extrusion/injection, processing, painting/plating, controlling, assembling, installation, etc.

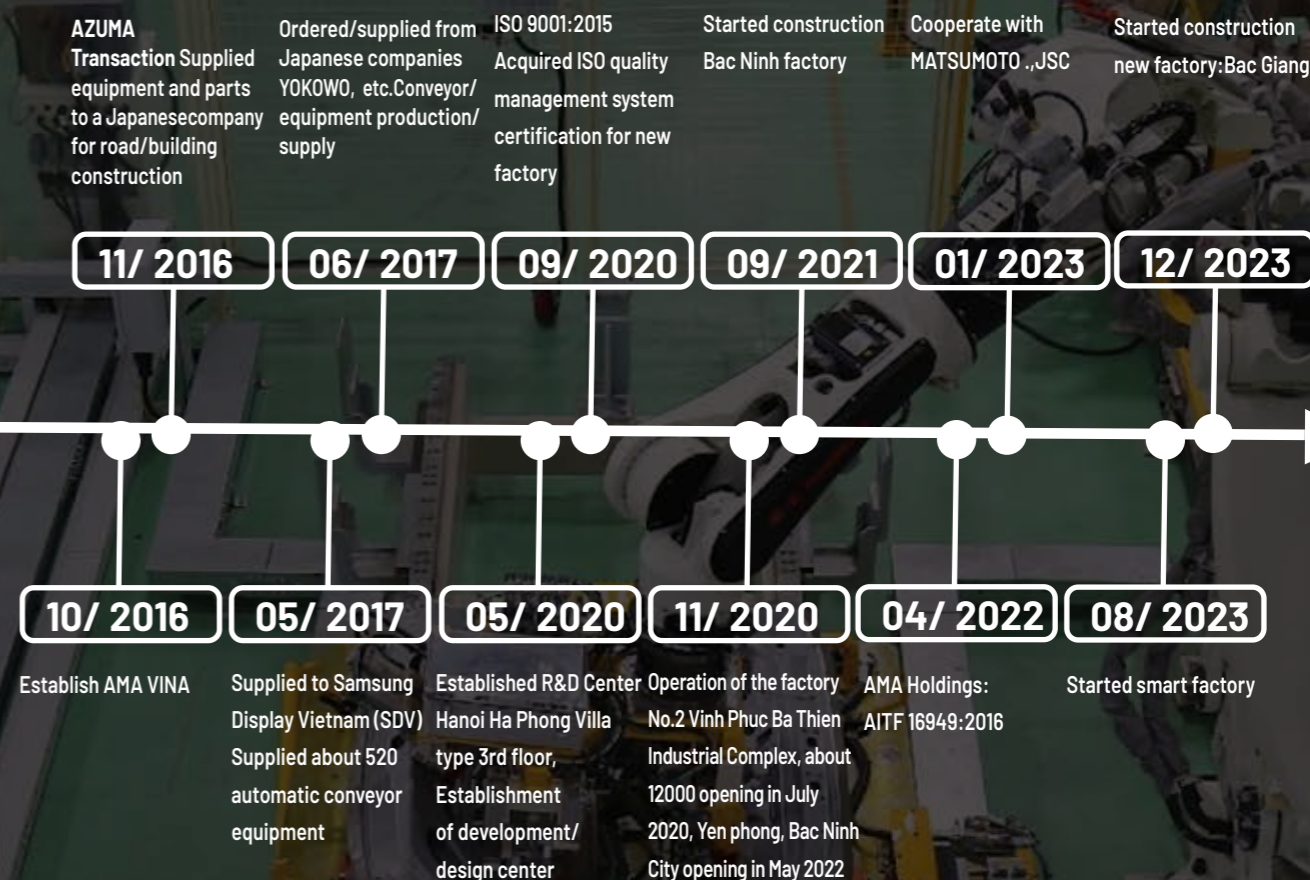
In order to become an expert in each field of production facilities and automation, we are trying our best until our customers are satisfied.

Thank you.

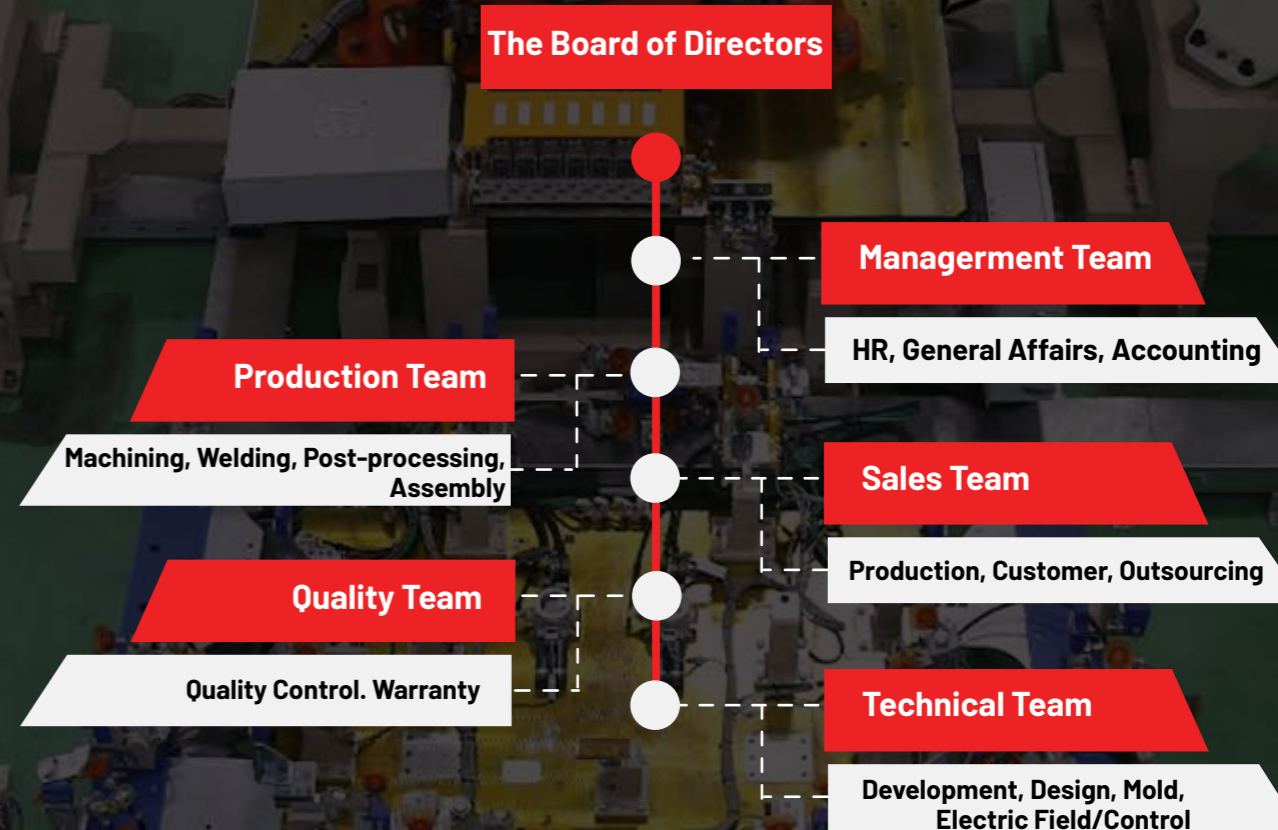
Company Name	AMA VINA
Representative	VU VAN MANH
Founded Time	Oct. 2016
Capital	AMA HOLDINGS \$ 7M, AMA \$ 2M
Revenue	\$ 8.05M (2022)
Employees	Total 298
Area	Ha Noi 1,980m ² , Bac Ninh 12,000m ² , Bac Giang 52,000m ²
Main business lines	Automation equipment/Tool manufacturing/ Mass processing/Daicasting



Main History



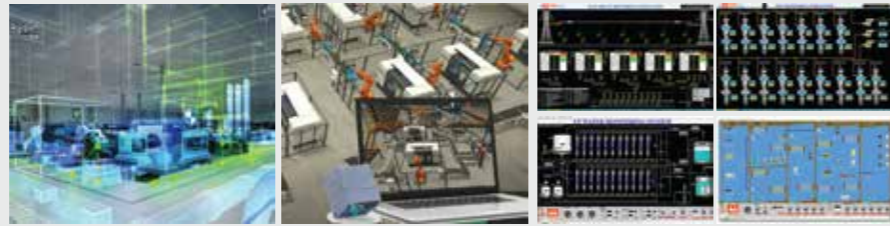
Organization



Main products

Technology and software solutions

1. Smart Factory
2. Scada, Andon system
3. Distributed control system (DCS)
4. IIoT Solution
5. AI/VISION



Automation

1. PLC programming
2. Automation Machine
3. Turnkey



CNC Machine

1. CNC milling
2. CNC lathe



Die Casting

1. Injection Mold
2. Die casting
3. Forming mold



Casting

1. Aluminum casting
2. Plastic casting



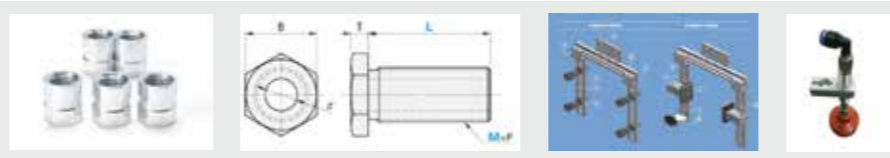
Sheet Metal Fabrication

1. Lazer cutting
2. Bending
3. Forming/ Forging



Standard Product

1. Fastener
2. Consumables

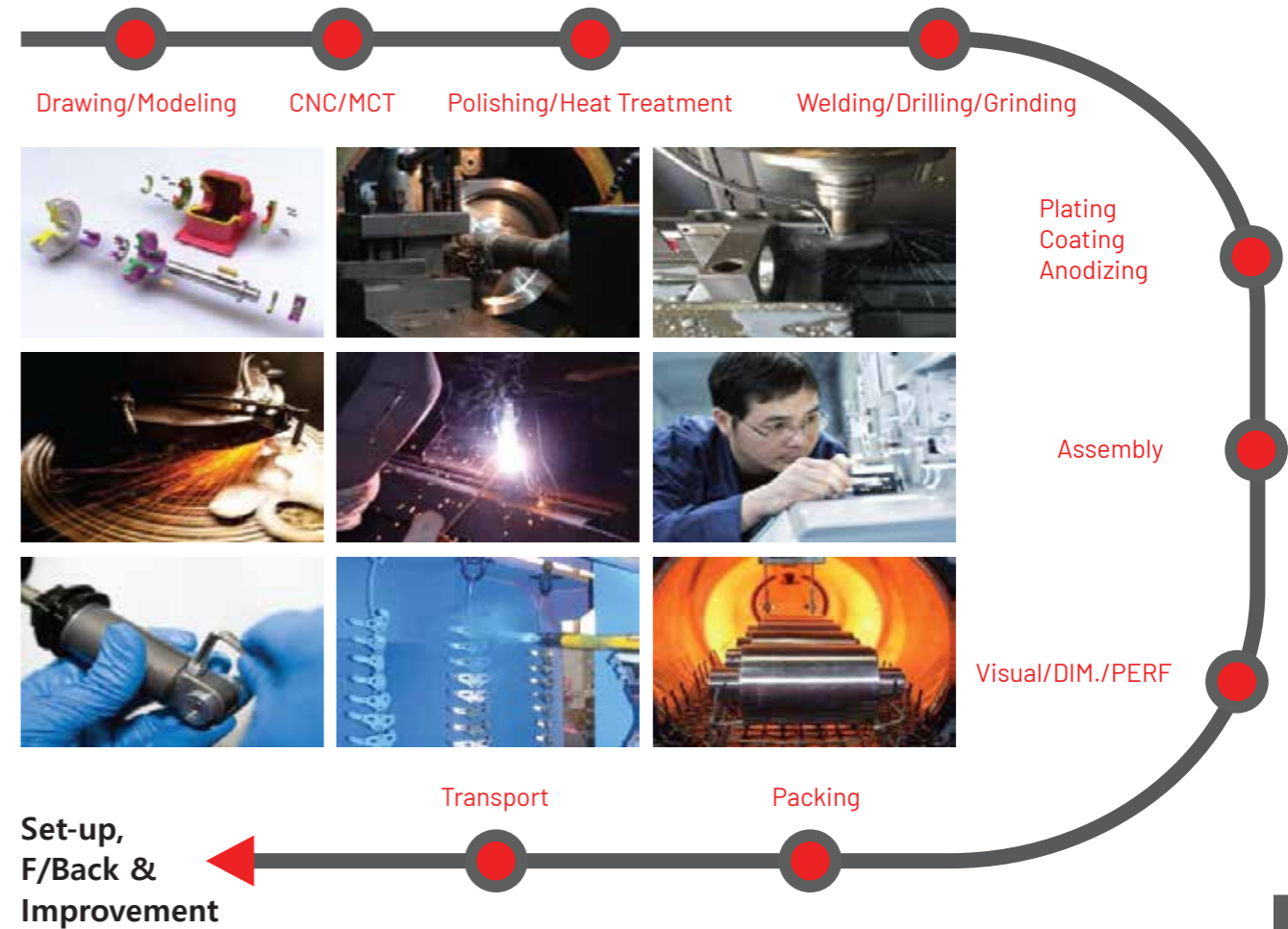


Traffic safety equipment

1. Traffic light
2. Retroreflecting Road Stud



Main process



Main equipment

No	Equipment	Maker	In-factory
01	CNC Machine(MCT)	WIA/DOOSAN/FANUC/Brother	40
02	CNC Lathe	Tsugami/Star/Okuma	48
03	Common Milling	HITACHI/Nigata/Howa/Enshu	11
04	Conventional NC Lathe	MORI SEIKI/Microstar/TS	9
05	Wire Cutting M/C	J&C/FODATECH	9
06	Laser Cutting M/C	BRUCO	3
07	Blanking Press	AMADA	4
08	Bending Press	AMADA/TOYOKOKI	7
09	Cutting Machine	KOMATSU/TOYOKOKI	6
10	Die Casting	TOYO, TOSHIBA	5
11	Xray testing machine	TXS Canner TXS-33000FD / 32300FD (Available from September 2024 Matsumoto factory in Japan)	1
12	Measuring instrument	2D/3D-3Dfamily/Dr.schneider	4
13	Etc	Welding/Drilling/Grinder/EDM	18

Main partners

PROCESS	COOPERATION CONTENTS	PARTNERS	FACTORY
Mold/ Extrusion Molding	<ul style="list-style-type: none"> ● Designing/Manufacturing of Mold ● Production/Anodizing of Profile and Aluminum products 	<ul style="list-style-type: none"> ● MT VINA GLOBAL 	
Manufacturing Processing	<ul style="list-style-type: none"> ● Sharing/cooperation of production facilities (CNC, Press, Cutting/Welding/Drilling, Etc.) ● Manufacturing of production equipment and precision parts 	<ul style="list-style-type: none"> ● DST ● AFM 	
Surface treatment	<ul style="list-style-type: none"> ● Coating/Plating to withstand corrosion and to be smooth and hard ● Liquid Painting/Powder Coatings, Zn/Cr/Ni/Al Plating, Anodizing 	<ul style="list-style-type: none"> ● ORISTAR ● HARD COAT 	
Automation (By Robot)	<ul style="list-style-type: none"> ● Parts Feeding, Sorting and Assembly System ● Cutting, Drilling, Polishing and Cleaning System ● Manufacturing automation system (Injection, Coating, CNC/Laser/Assembly line, Etc.) 	<ul style="list-style-type: none"> ● YUDO 	
Die Casting	<ul style="list-style-type: none"> ● A strategic partner in the production of aluminum casting products with the application of new technology specializing in producing products with high difficulty. 	<ul style="list-style-type: none"> ● MATSUMOTO 	

Main Customers



Thanks!